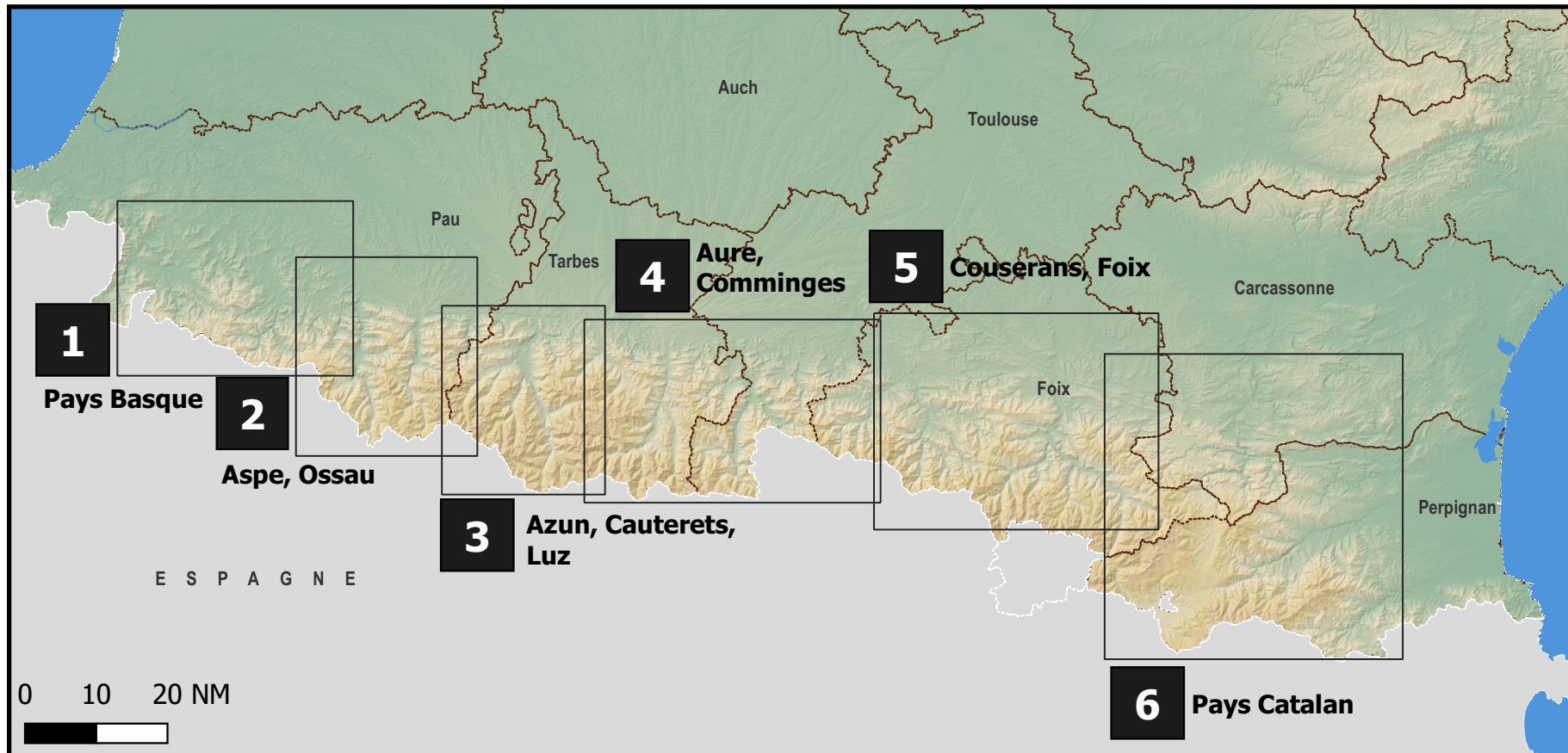

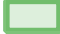


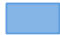




## Pyrénées - Sommaire des secteurs



LEGENDE CARTES :

-  ZSM Actives
-  Parcs ou réserves naturelles dont le survol est réglementé
-  Mers, Océans
-  Glacier
-  Lacs, étangs etc.
-  Bâtis, Zones d'activités
-  Limites départementales

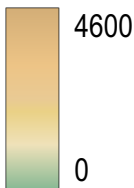
Fleuves, rivières, canaux



Liaisons routières




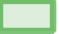


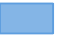


Teintes hypsométrique (en mètres)



Aéroports, Aérodromes, Altiports

- Altisurfaces
-  Civils
-  Civils hydro
-  Civils, piste non-revêtue
-  Désaffectés
-  Militaires
-  Militaires, piste non-revêtue
-  Mixtes
-  Privés

MAPS LEGEND :

-  Active MSA
-  Nature reserves and parks over which flight is restricted.
-  Seas, Oceans
-  Glacier
-  Lakes, Ponds, etc.
-  Constructions, Areas of activities
-  Departmental borders

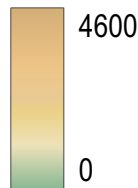
Rivers, canals











Road connections



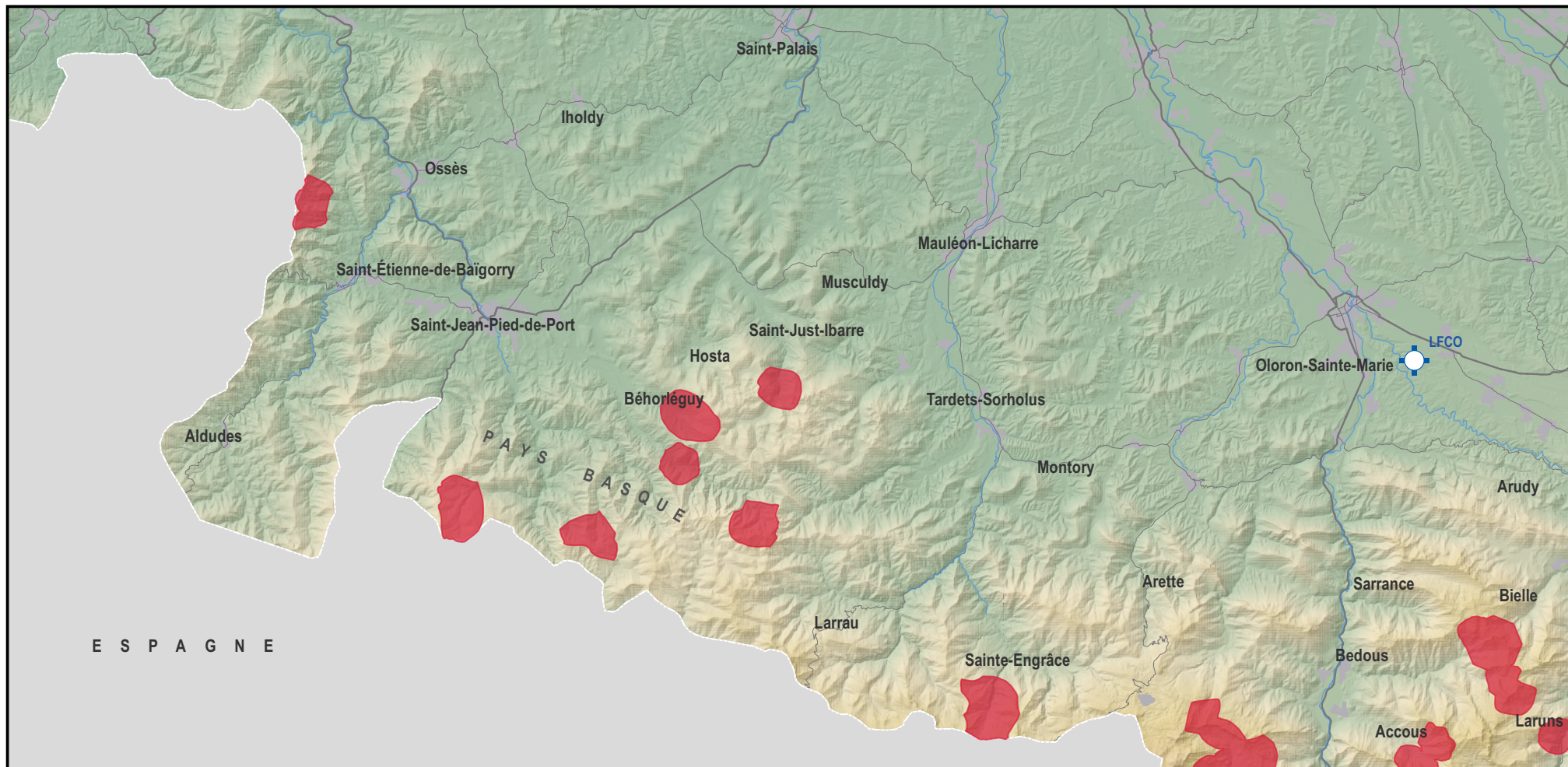
Hypsometric shades (in meters)



Airfields, airports, mountain airfields

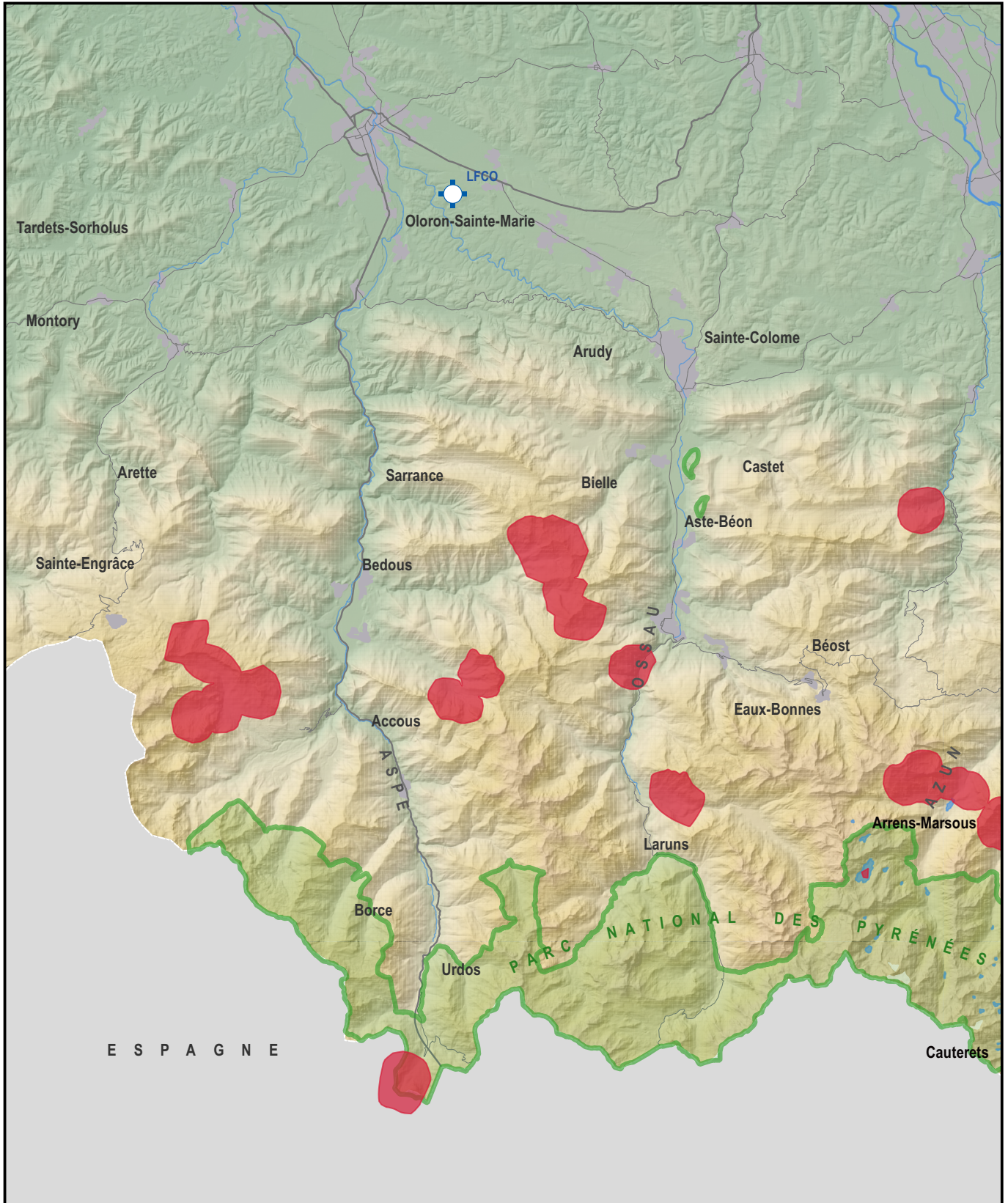
- High altitude airstrip
-  Civil
-  Civil hydro
-  Civil, unpaved runway
-  Not in use
-  Military
-  Military, unpaved runway
-  Civil/Military
-  Private

# 1. Pays Basque



Carte valable du 01/11/2022 au 28/02/2023

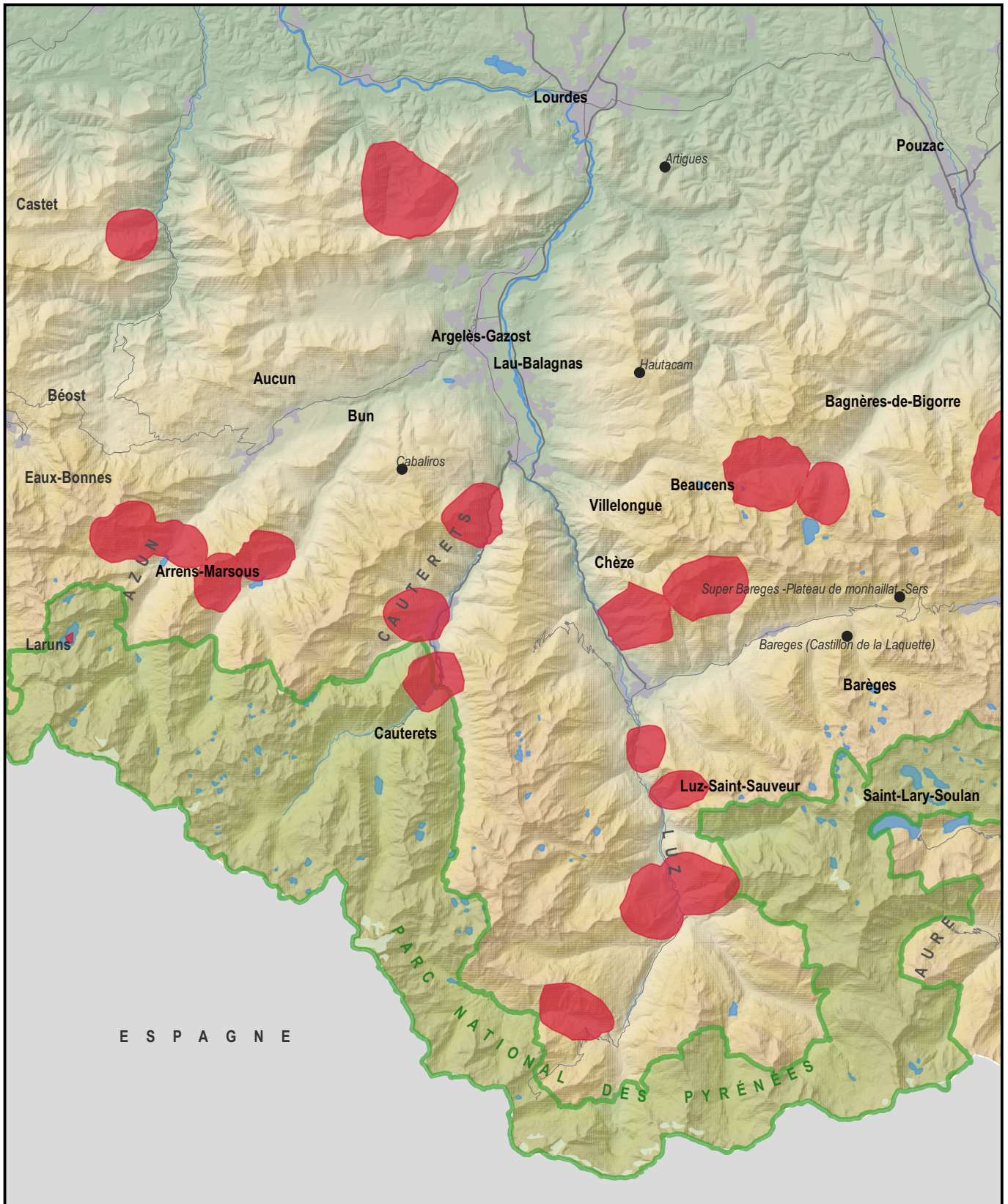
## 2. Aspe, Ossau



0 5 10 NM

Carte valable du 01/11/2022 au 28/02/2023

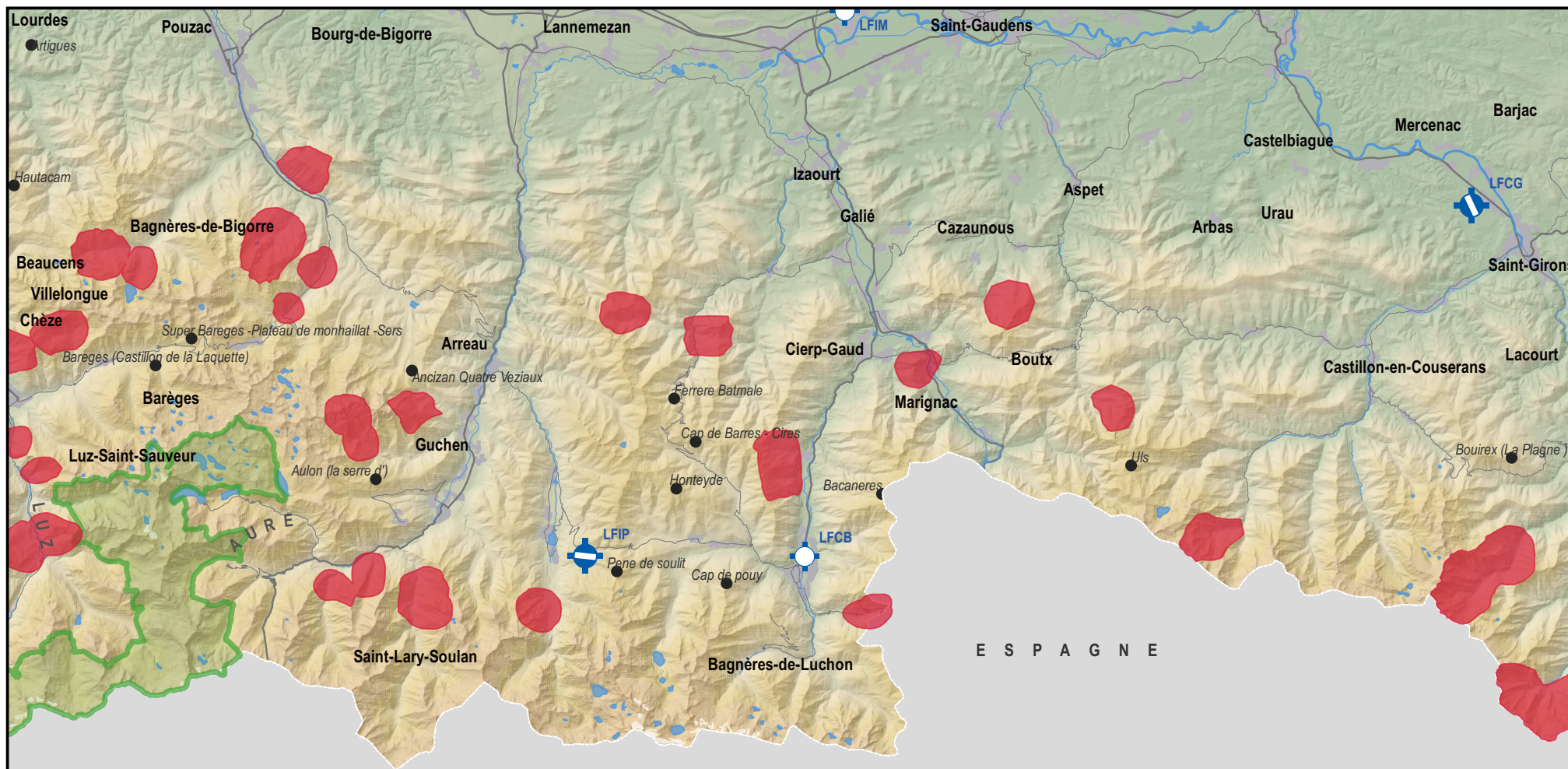
### 3. Azun, Cauterets, Luz



0 5 10 NM

Carte valable du 01/11/2022 au 28/02/2023

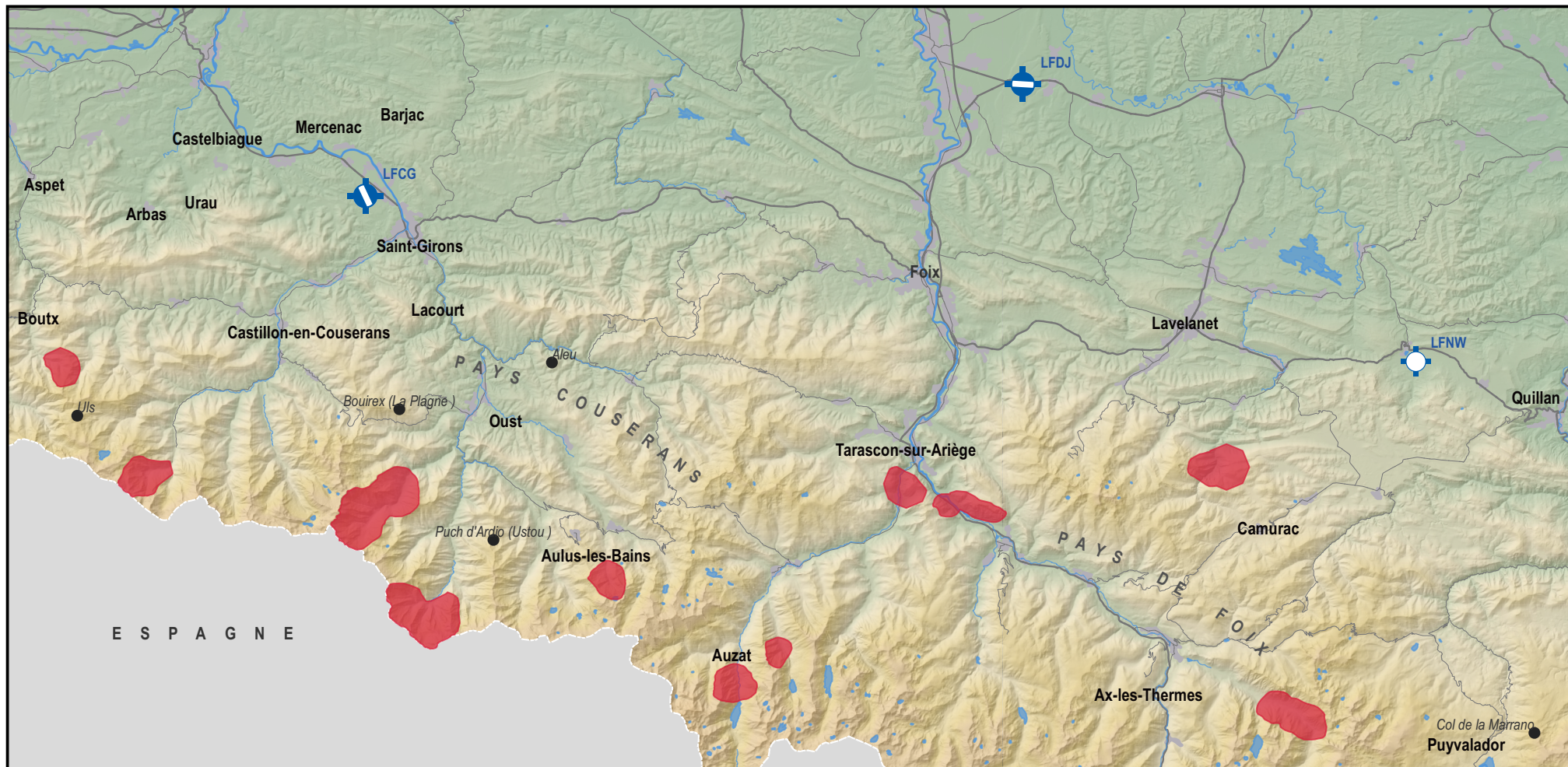
## 4. Aure, Comminges



0 5 10 NM

Carte valable du 01/11/2022 au 28/02/2023

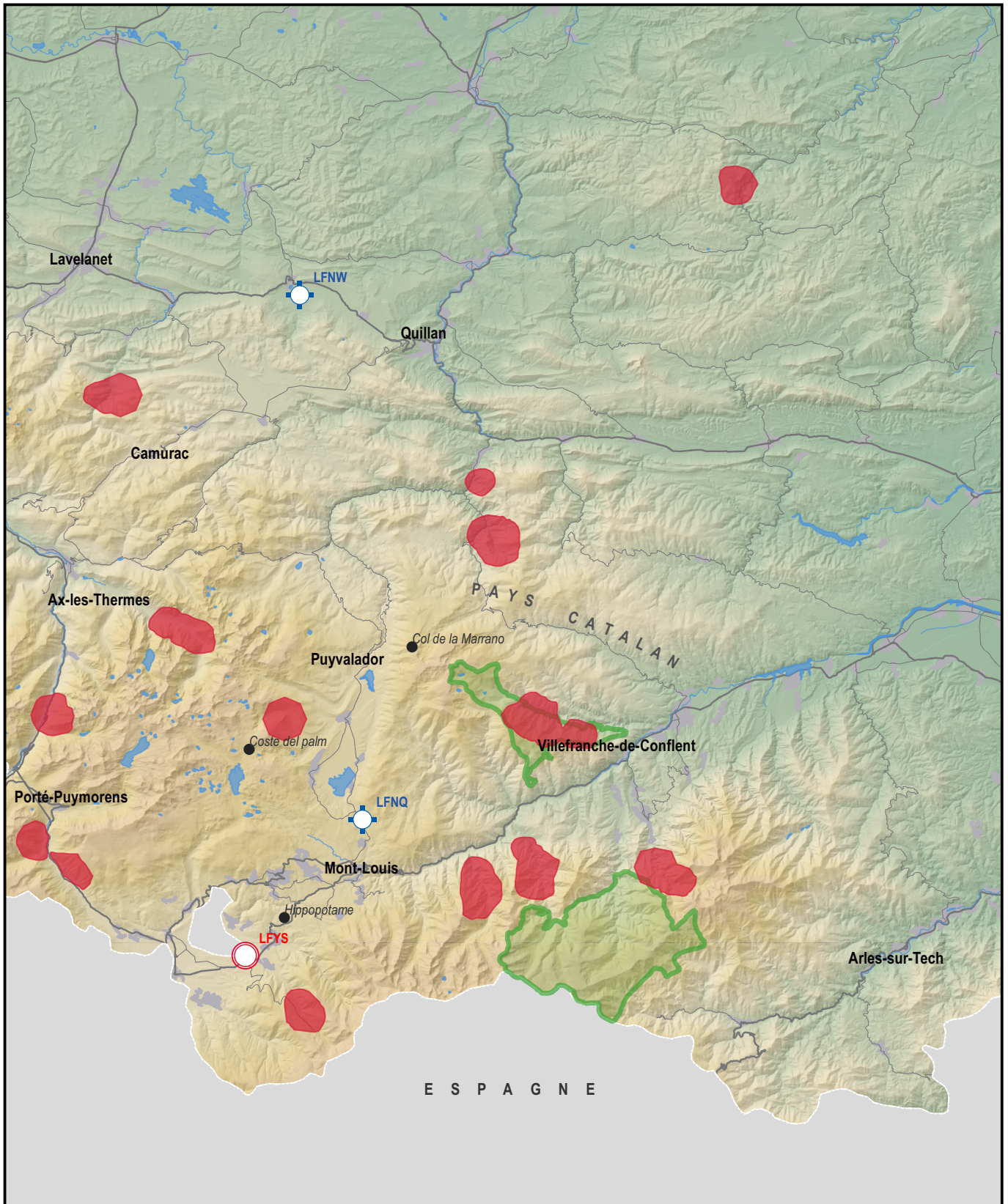
## 5. Couserans, Foix



0 5 10 NM

Carte valable du 01/11/2022 au 28/02/2023

## 6. Pays Catalan



Carte valable du 01/11/2022 au 28/02/2023