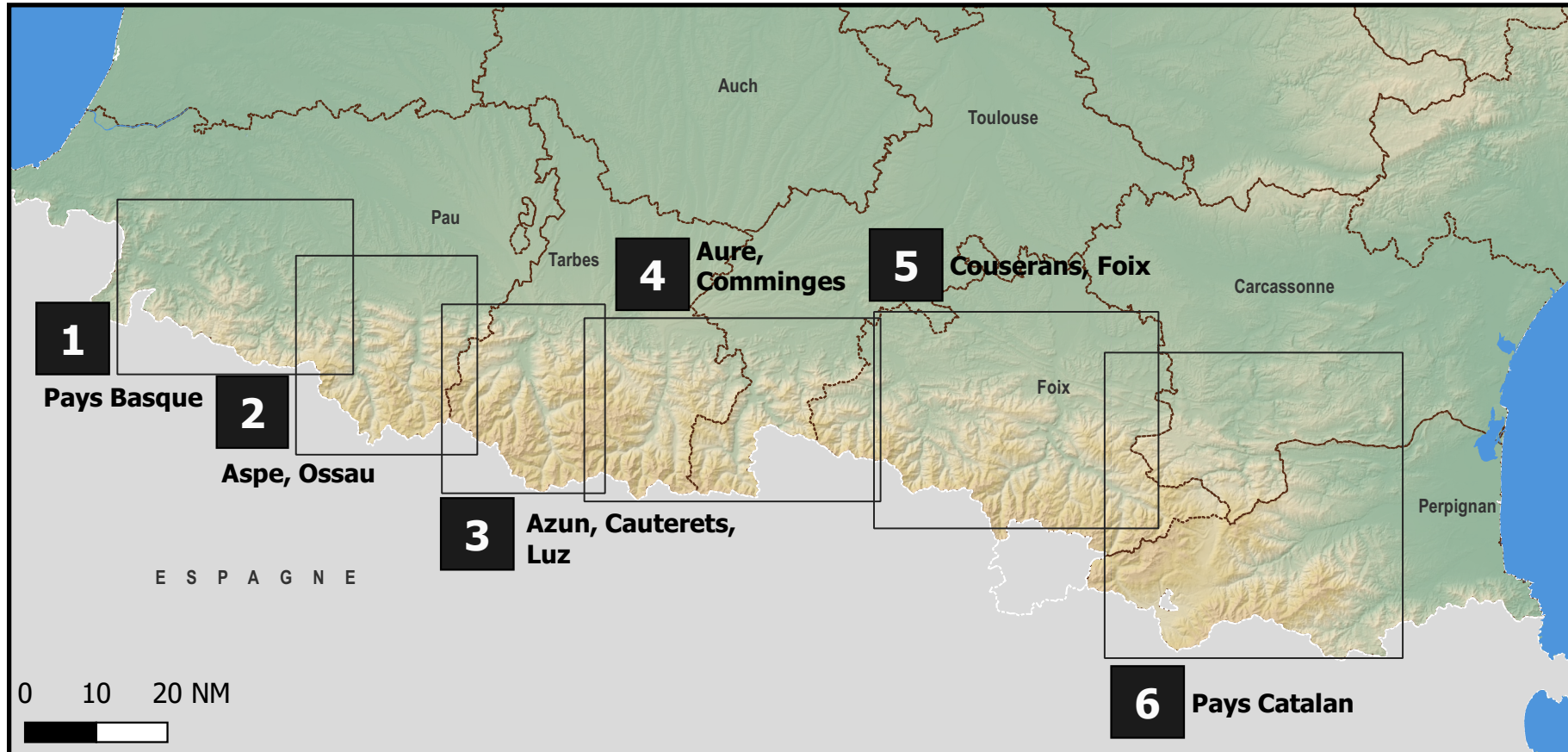


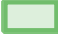






## Pyrénées - Sommaire des secteurs



LEGENDE CARTES :

-  ZSM actives
-  9134 Altitude maximale de la ZSM en pieds (ft)
-  Parcs ou réserves naturelles dont le survol est réglementé

Mers, Océans

-  Glacier
-  Lacs, étangs etc.
-  Bâtis, Zones d'activités
-  Limites départementales

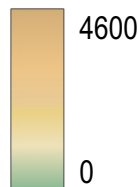
Fleuves, rivières, canaux











Liaisons routières




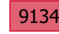

Teintes hypsométrique (en mètres)







Aéroports, Aérodromes, Altiports

- Altisurfaces
-  Civils
-  Civils hydro
-  Civils, piste non-revêtue
-  Désaffectés
-  Militaires
-  Militaires, piste non-revêtue
-  Mixtes
-  Privés

MAPS LEGEND :

-  Active MSA
-  9134 Maximum altitude of the MSA in feet (ft)
-  Nature reserves and parks over which flight is restricted.

Seas, Oceans

-  Glacier
-  Lakes, Ponds, etc.
-  Constructions, Areas of activities
-  Departmental borders

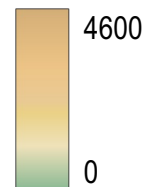
Rivers, canals



Road connections



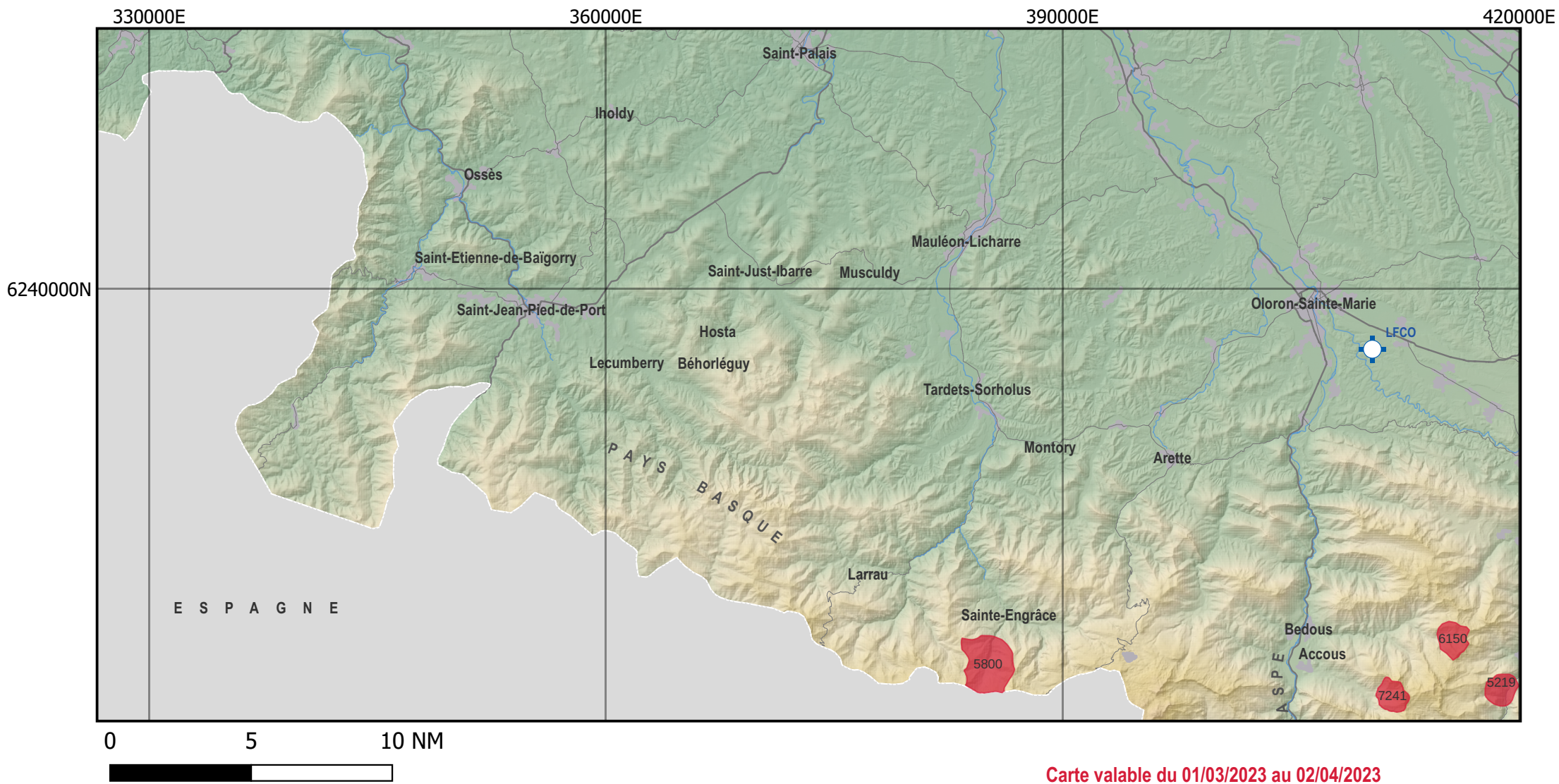
Hypsometric shades (in meters)



Airfields, airports, mountain airfields

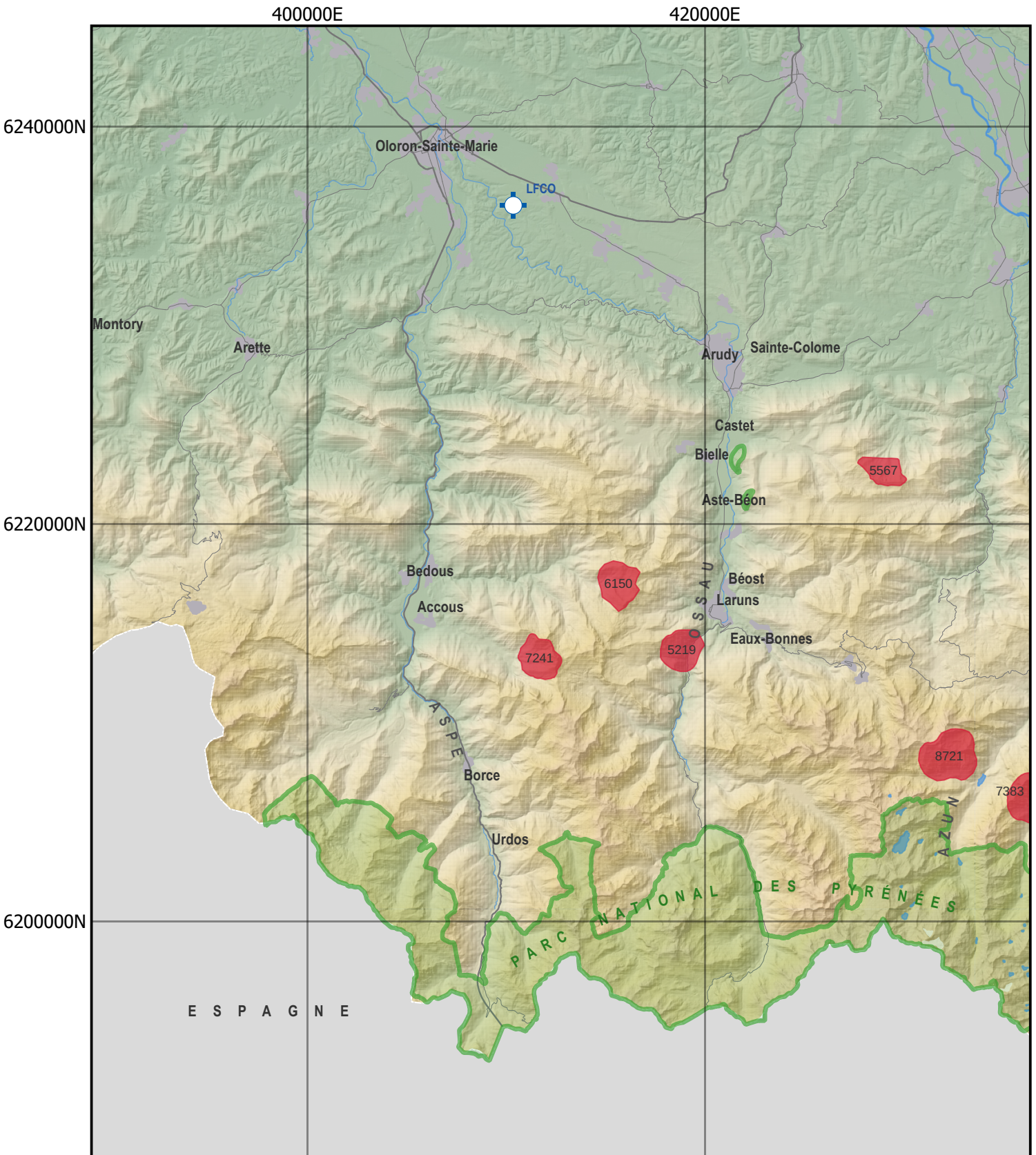
- High altitude airstrip
-  Civil
-  Civil hydro
-  Civil, unpaved runway
-  Not in use
-  Military
-  Military, unpaved runway
-  Civil/Military
-  Private

# 1. Pays Basque



Carte valable du 01/03/2023 au 02/04/2023

## 2. Aspe, Ossau



Carte valable du 01/03/2023 au 02/04/2023

### 3. Azun, Cauterets, Luz

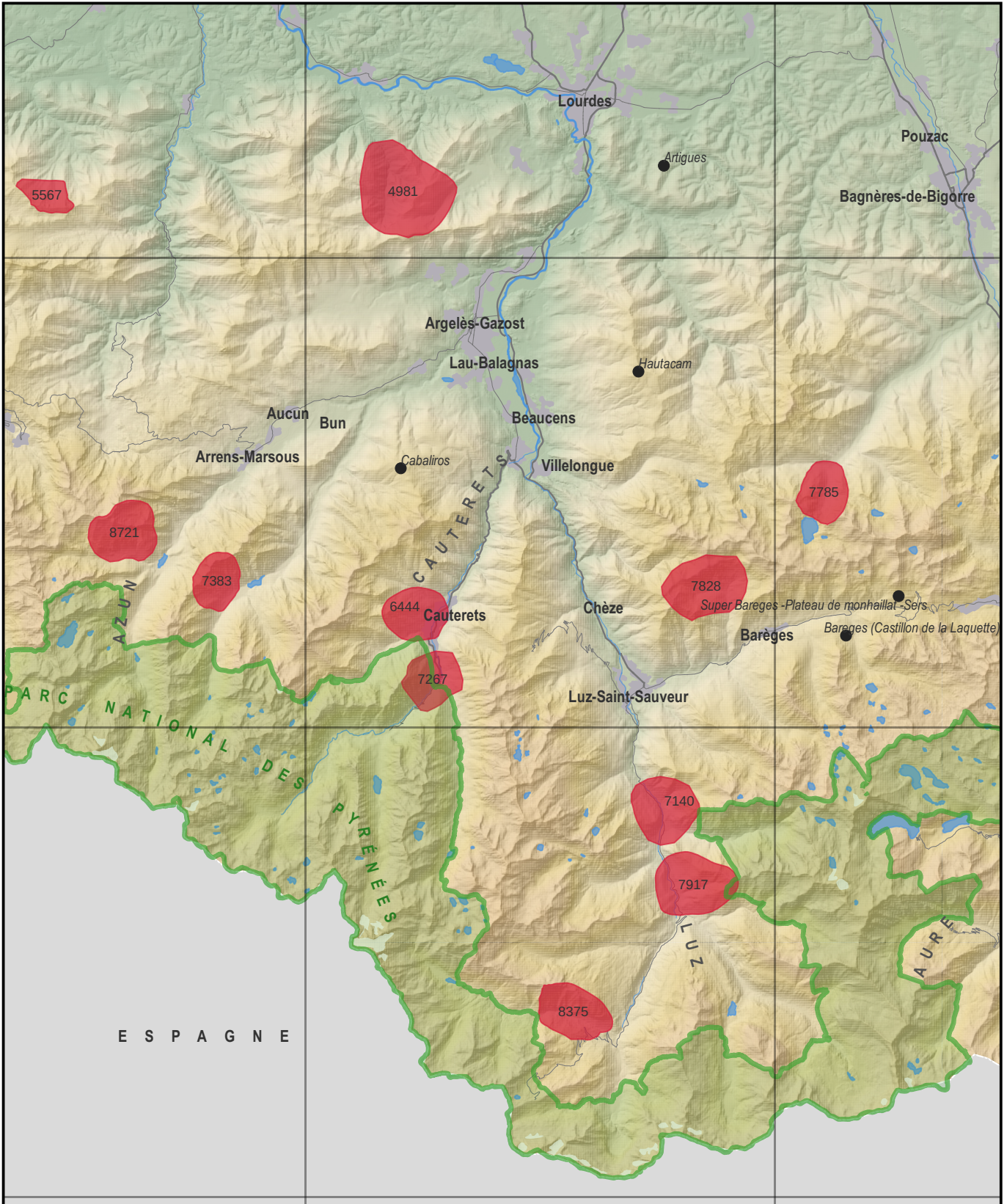
440000E

460000E

6220000N

6200000N

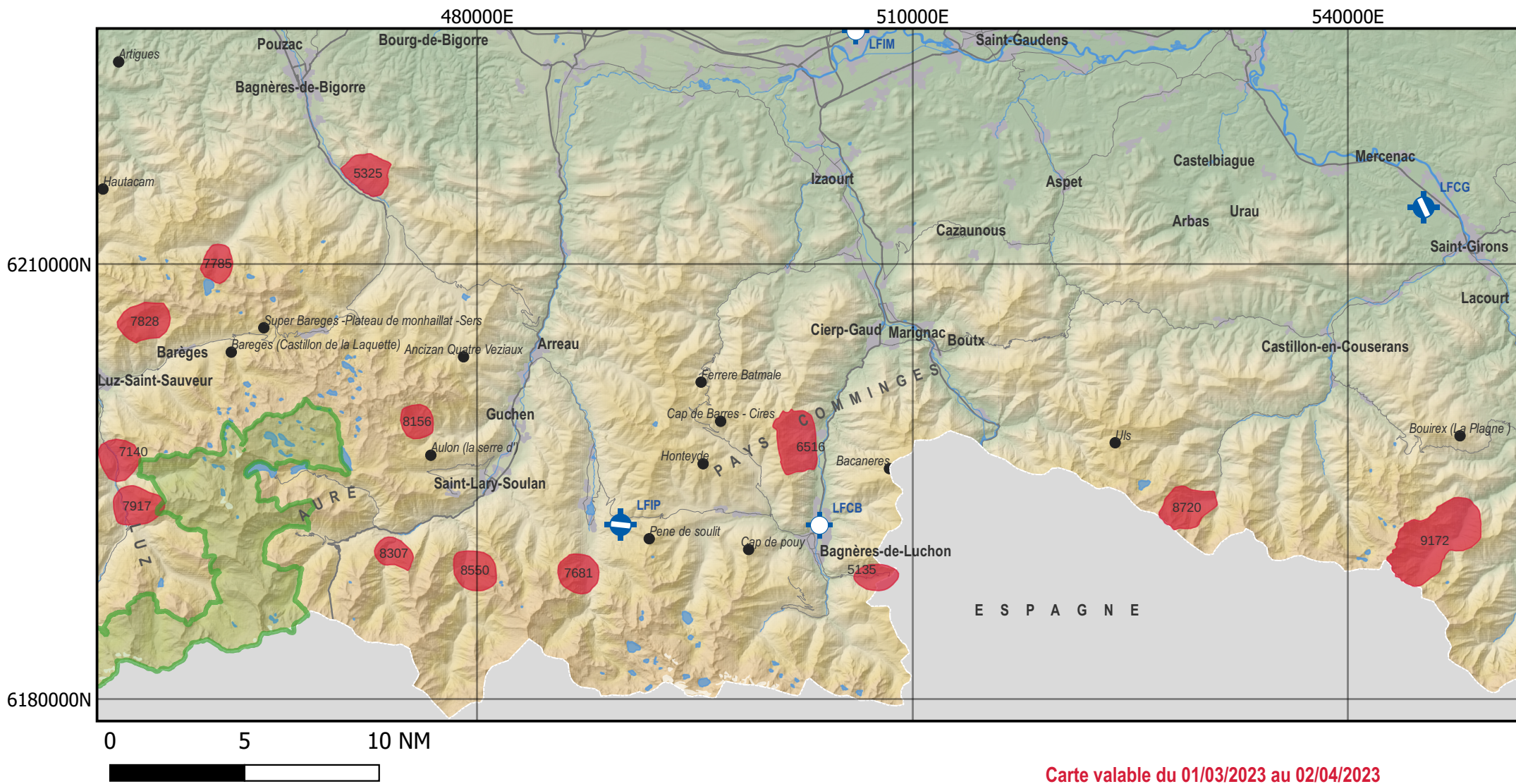
6180000N



0 5 10 NM

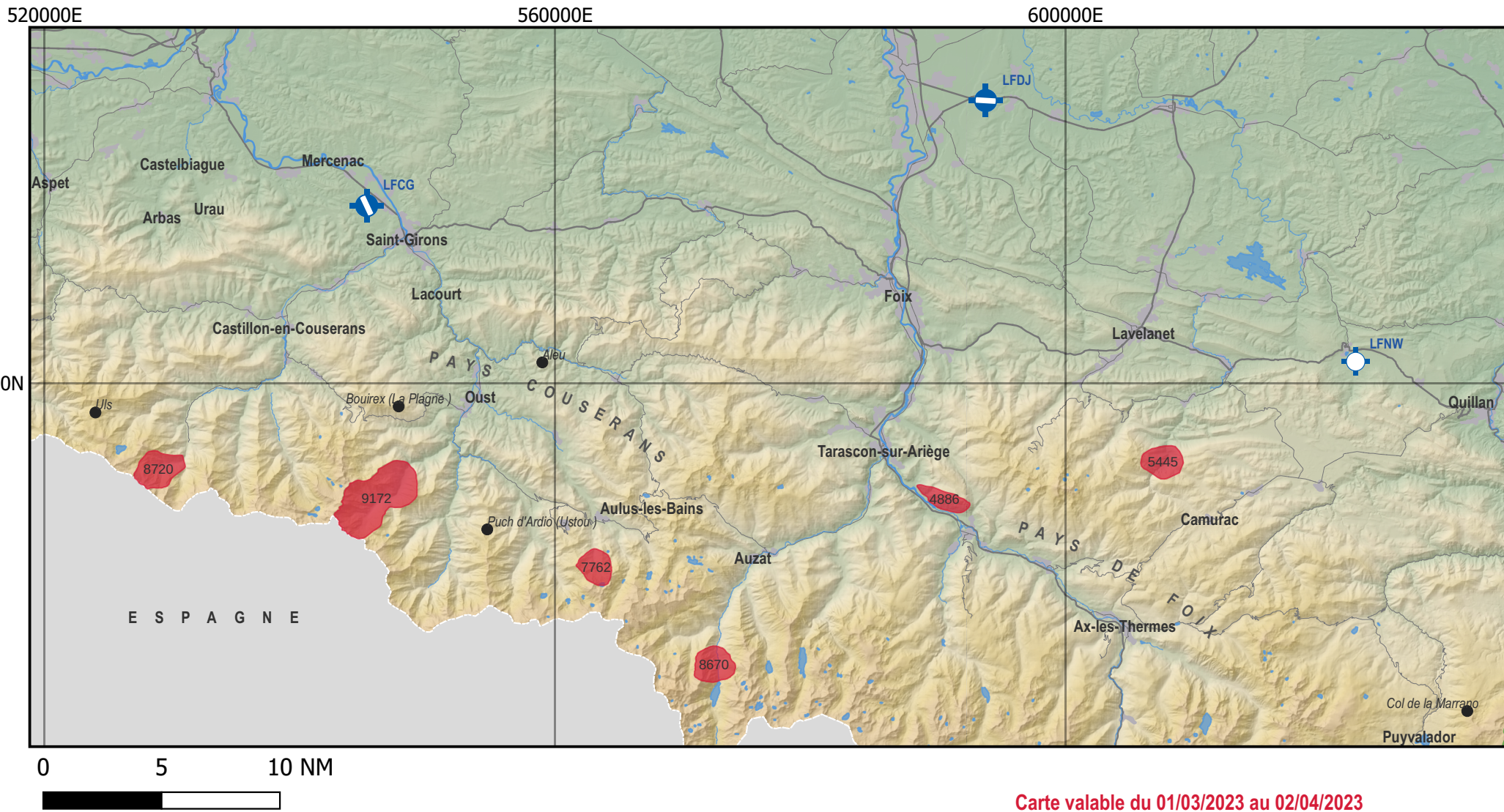
Carte valable du 01/03/2023 au 02/04/2023

# 4. Aure, Comminges



Carte valable du 01/03/2023 au 02/04/2023

# 5. Couserans, Foix



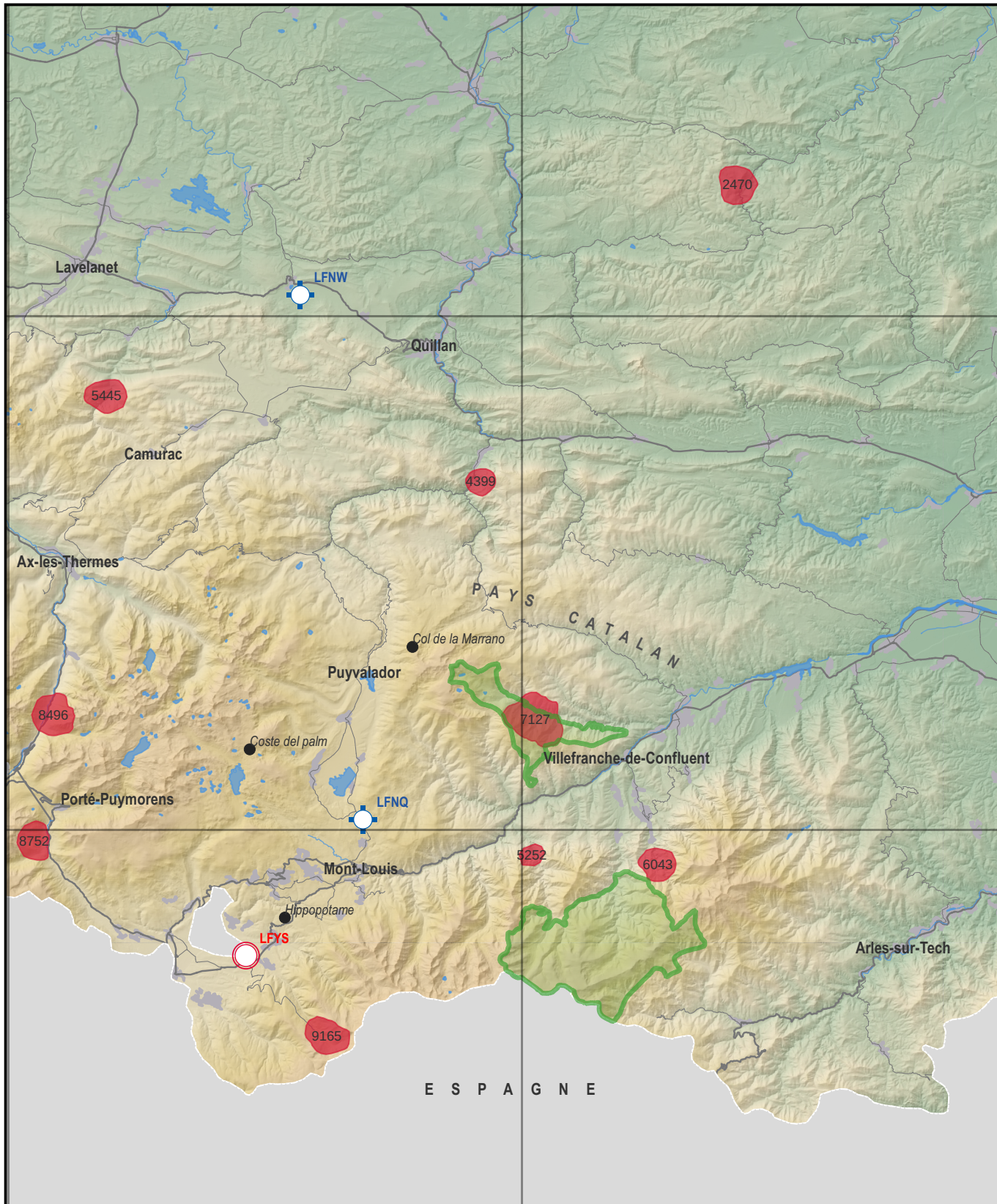
# 6. Pays Catalan

600000E

640000E

620000N

616000N



0 5 10 NM



Carte valable du 01/03/2023 au 02/04/2023